

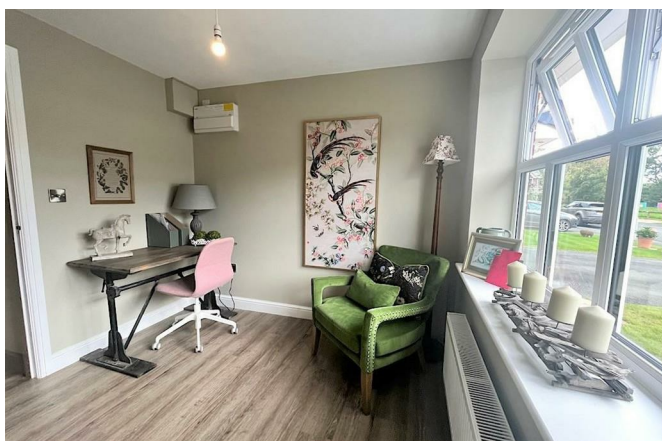
21 Birchwood Drive Whittington Oswestry SY11 4PS



3 Bedroom House - Detached
£1,200 PCM

The features

- Gas Central Heating and Double Glazing
- Study
- Living Room
- Principal Bedroom with Ensuite
- Rear Garden and Driveway Parking
- Kitchen/Dining Room with Integrated Appliances
- Utility Room
- Cloakroom
- Two Further Bedrooms and Bathroom
- EPC Rating D



****A FABULOUS 3 BEDROOM DETACHED HOME****

A three bedroom detached property situated within Whittington. The accommodation briefly comprises: Entrance Hall, Study, Living Room, Cloakroom, Kitchen/Dining Room, Utility Room, Principal Bedroom with En suite, Two further bedrooms, Bathroom. Rear garden with wonderful views, ample driveway parking.

Property details

ENTRANCE HALL

With wood effect flooring

STUDY

With wood effect flooring, window to front aspect, radiator

CLOAKROOM

With tiled flooring, low level WC, wash hand basin, fitted storage unit, wall mounted heated towel rail, window to side aspect

LIVING ROOM

With carpet, window to front aspect, radiator

KITCHEN/DINING ROOM

With wood effect flooring, a range of high gloss units with wood effect work surface over, induction hob, integrated oven, dishwasher, wine fridge, fridge/freezer, sink set into base unit. Pantry offering storage with shelving. Double doors leading to outside, window to rear aspect

UTILITY ROOM

With recess and plumbing for washing machine, and recess for condenser tumble dryer, sink set into base unit, microwave, a range of high gloss units with wood effect work surface over

STAIRS AND LANDING

With carpet, airing cupboard

PRINCIPAL BEDROOM

With carpet, radiator, window to front aspect

EN SUITE

With 3 piece suite to include; Wash hand basin set in vanity unit, low level WC, shower cubicle, wall mounted heated towel rail, window to front aspect

BEDROOM 2

With carpet, window to front aspect, two fitted wardrobes

BEDROOM 3

With carpet, window to front aspect, radiator

BATHROOM

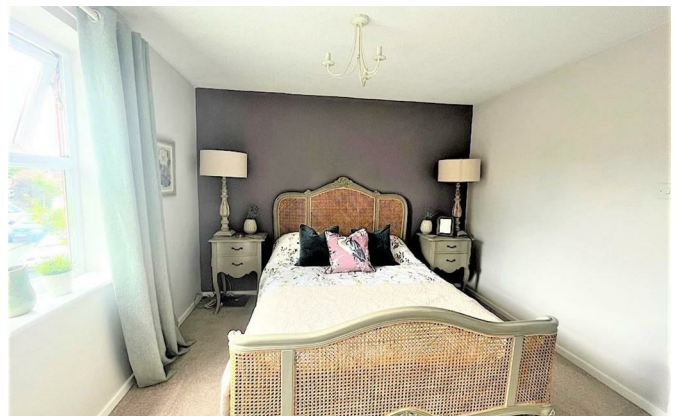
With 3 piece suite to include: panelled bath with shower head over, low level WC, pedestal wash hand basin, wall mounted heated towel rail, window to rear aspect

OUTSIDE

With ample driveway parking. Rear garden housing two sheds providing storage, patio and lawn area enclosed with wooden fencing.

21 Birchwood Drive, Whittington, Oswestry, SY11 4PS.

3 Bedroom House - Detached
£1,200 PCM





Judy Bourne

Director at Monks

judy@monks.co.uk

Get in touch

Call. 01743 361422

Email. info@monks.co.uk

Click. www.monks.co.uk

Shrewsbury office

10a-11 Shoplatch,
Shrewsbury, Shropshire, SY1

We're available 7 days a week

HOME – four words that define who,
and what we are:

Honest, Original, Motivated, Empathetic

Energy Efficiency Rating		
	Current	Potential
Very energy efficient - lower running costs		
(92 plus) A		
(81-91) B		
(69-80) C		
(55-68) D		
(39-54) E		
(21-38) F		
(1-20) G		
Not energy efficient - higher running costs		
England & Wales	EU Directive 2002/91/EC	

Environmental Impact (CO ₂) Rating		
	Current	Potential
Very environmentally friendly - lower CO ₂ emissions		
(92 plus) A		
(81-91) B		
(69-80) C		
(55-68) D		
(39-54) E		
(21-38) F		
(1-20) G		
Not environmentally friendly - higher CO ₂ emissions		
England & Wales	EU Directive 2002/91/EC	

Monks for themselves and for the vendors of this property, whose agents they are give notice that:

- These particulars provide a general outline only for the guidance of intended purchasers and do not constitute part of an offer or contract.
- All descriptions, dimensions and distances are approximate, references to state and condition, relevant permissions for use and occupation and other details are provided in good faith and believed to be correct.
- No person in the employment of Monks has any authority to make or give any representation or warranty whatever in relation to this property.
- Electrics and other appliances mentioned in these particulars have not been tested by Monks. Therefore prospective purchasers must satisfy themselves as to their working order.